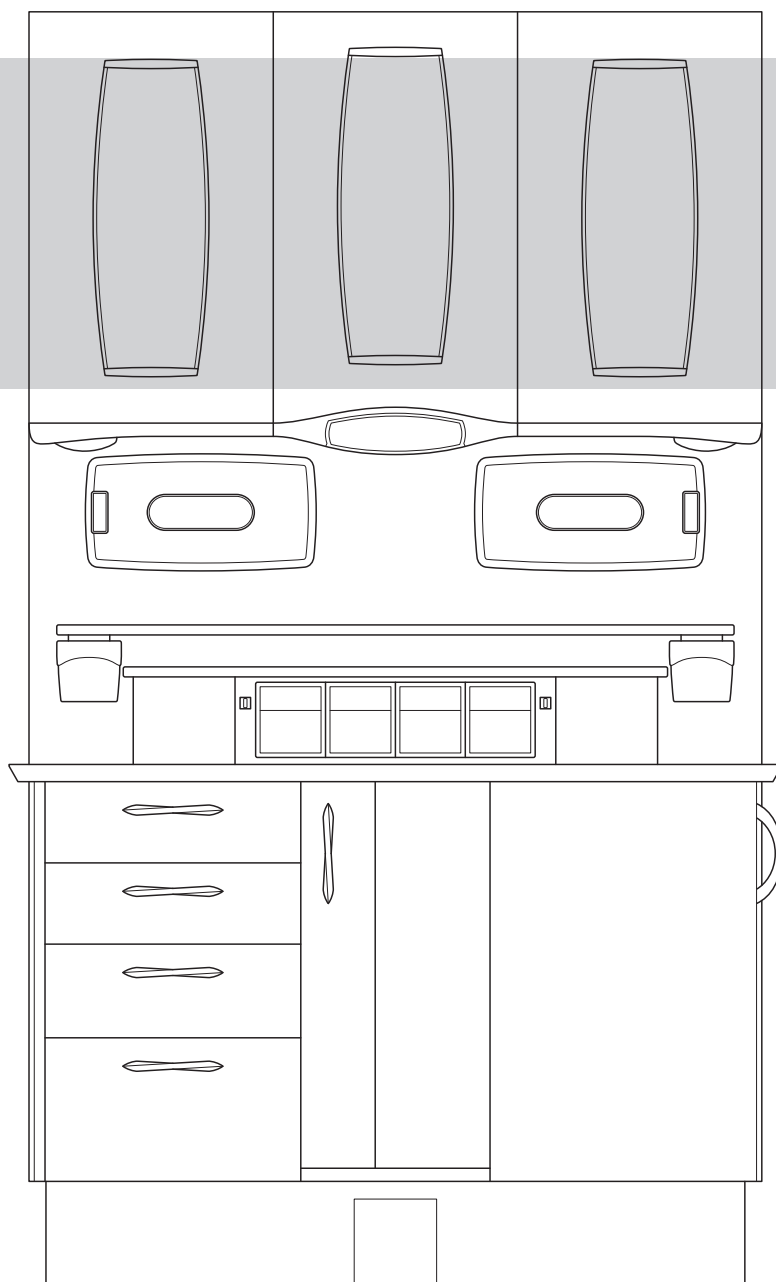
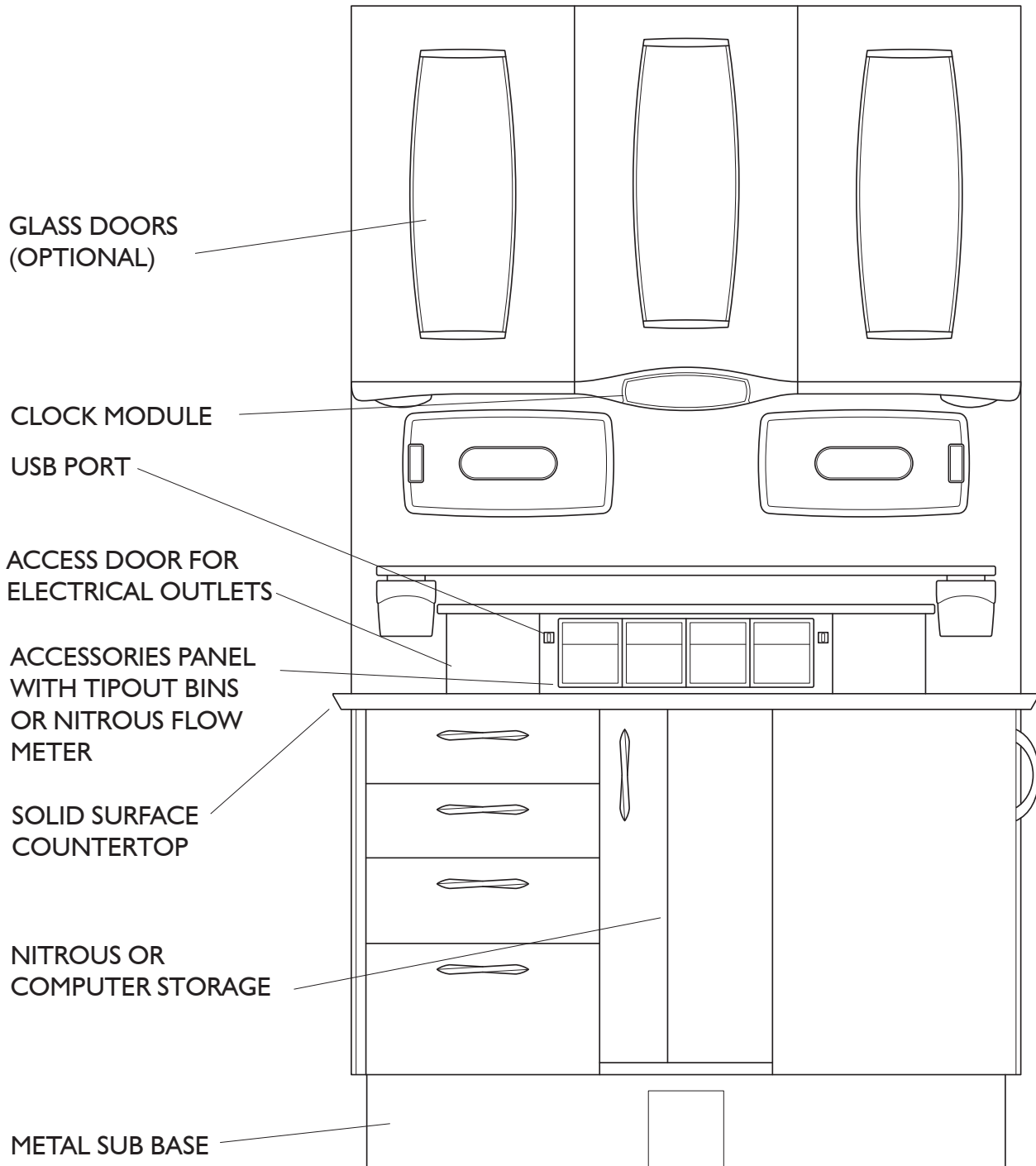


SERIES 5
12 O'CLOCK CABINET
Installation Instructions



OVERVIEW



INTRODUCTION

BEFORE YOU BEGIN

Study the overview and dimensional specifications. Make sure the planned location will have the necessary space available for installation, including room for all of the operatory equipment.

Locate all documentation supplied with the package. Manuals and installation sheets may be found in one or more boxes accompanying their respective components. Set aside the Instructions For Use for the end user to review.

SYMBOLS USED IN THIS MANUAL

The following symbols may be used throughout this product manual:



WARNING: Failure to carefully follow the described procedure may result in damage to the equipment or the operator.



CAUTION: Failure to carefully follow the described procedure may result in damage to the equipment.



NOTE: Take note of additional important information. Not a warning or caution.



ELECTRICAL HAZARD: Risk of electrical shock present. Ensure that power is disconnected before attempting procedure.

TABLE OF CONTENTS

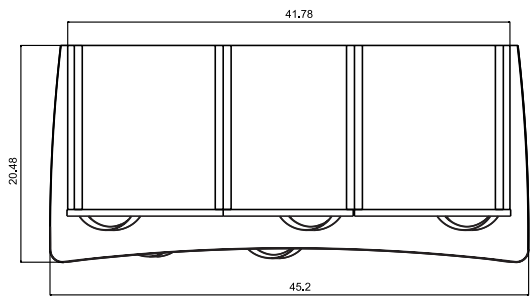
Overview	2
Introduction	3
Dimensional Specifications	4
Site Preparation	5
Lower Cabinet Installation	7
Upper Cabinet Installation	8
Door and Drawer Alignments	12
Electrical Outlets	13

REGULATORY INFORMATION

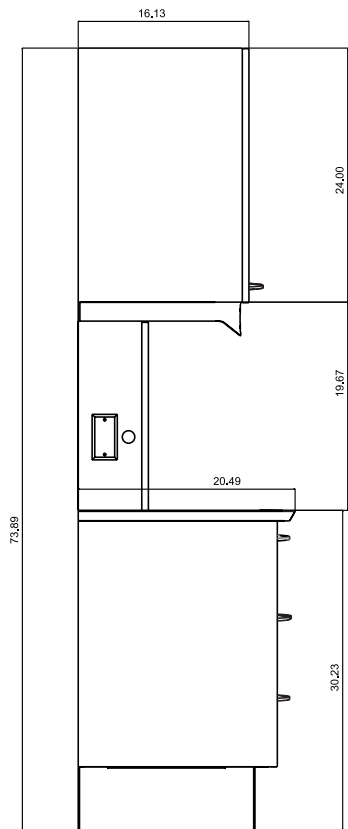
Regulatory information is delivered with DCI Edge dental equipment as mandated by agency requirements and can be found in the accompanying Instructions For Use for this device.

DIMENSIONAL SPECIFICATIONS - SERIES 5

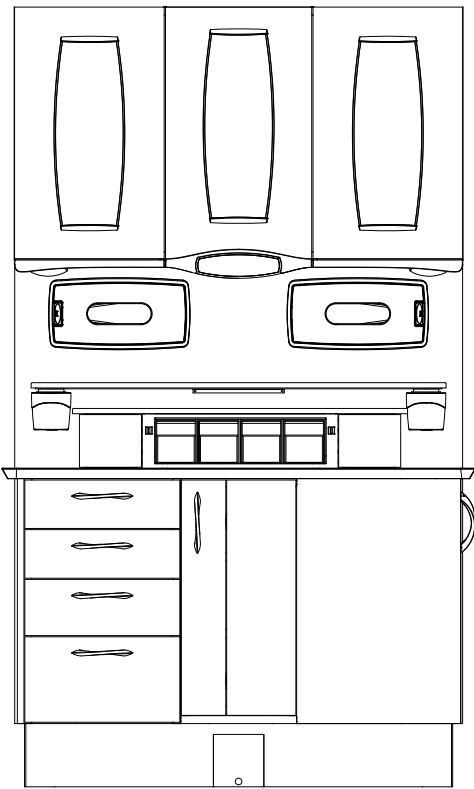
TOP VIEW



SIDE VIEW



FRONT VIEW



SITE PREPARATION

FIRST STEPS

- 1 Lay the installation template over plumbing stub-ups and check the position in the operatory.
- 2 Install air and water shut-off valves (not supplied).
- 3 Install 4" x 4" electrical connection box.
- 4 Mark the cabinet mounting points according to the template.

AIR

Pipe: 1/2" n.p.t. Protruding 1" from the floor. Supplied by contractor.
Air supply: pressure 80-100 psi. Air should be free from contaminants.

WATER

Pipe: 1/2" n.p.t. Protruding 1" from the floor. Supplied by contractor.
Water supply: pressure 40-80 psi. Water should be flushed clean before connecting to this equipment.

ELECTRICAL

Electrical: 4" x 4" x 2-1/8" Electrical Connection Box with 1/2" conduit knockouts.
Wire box as per local code with top of the box no higher than 4-1/2" above finished floor.
Voltage: 115 VAC, 3 wire, 15 or 20 amp with ground fault circuit interrupter (Series 5 cabinet only).



WARNING: Ensure the cabinet is properly grounded to protective earth.



WARNING: 3rd party x-ray systems must be connected to a dedicated electrical circuit.



CAUTION: Electrical utilities must be installed according to local codes and by a licensed electrician.

See "Electrical Outlets" Page 10

CENTRAL VACUUM

Pipe: supplied by contractor. Terminated with 5/8" OD tube protruding 1" from the finished floor.

GRAVITY DRAIN

Pipe: 5/8" OD tube protruding 1" from the floor. Place trap in-line and use vented fitting to conform to local codes.
Supplied by contractor.

SITE PREPARATION

PREPARATIONS

- 1** Remove cabinet modules from their packaging.
- 2** Identify the hardware kits and provided literature.



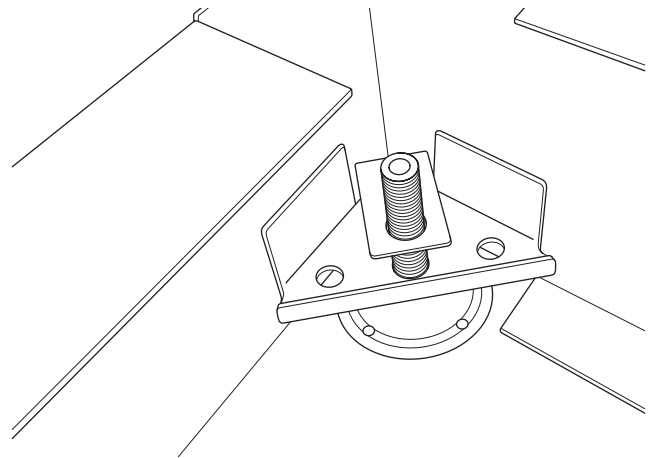
WARNING: Always lift cabinets by the bottom edge, being careful to lift with your legs and not your back. Do not lift from the underside of the counter.

LOWER CABINET INSTALLATION

SUPPORT WALL & LOWER CABINET

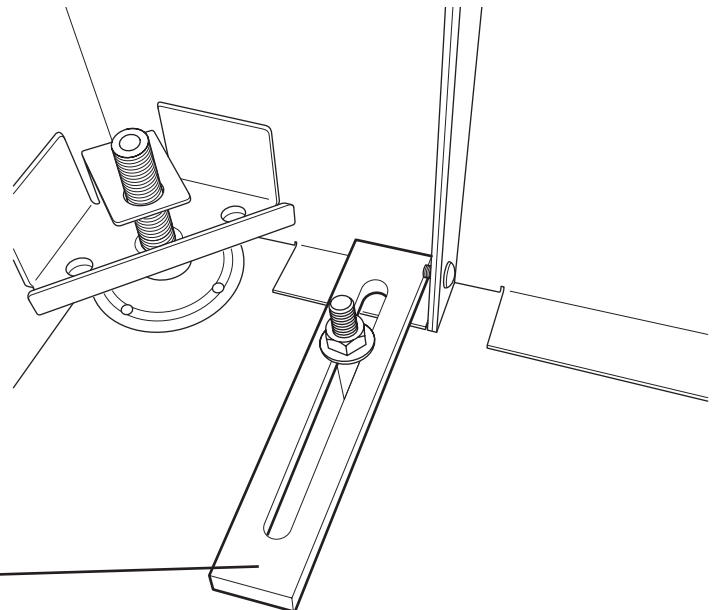
- 1** Position the Support Wall in its final location in the installation area and align the back face of the Lower Cabinet to it. Be sure the Lower Cabinet is centered against the Support Wall.
- 2** With a helper, use the 1/2" holes in the metal base frame to mount the Support Wall to the floor. Secure using 1/2" lag bolts (or 1/2" anchors for concrete).

- 3** Level the cabinet with the 4 levelers included. Note that there are access holes inside the cabinets to use the 5mm Hex tool provided.



- 4** Attach the Lower Cabinet to the Support Wall using the wood screws provided.

- 5** Use the provided floor mount brackets and 3/8" lag bolts (or 3/8" anchors for concrete). Insert the lag bolt or anchor through the slot in the bracket and drive the lag bolt into the floor to secure the metal base to the floor.

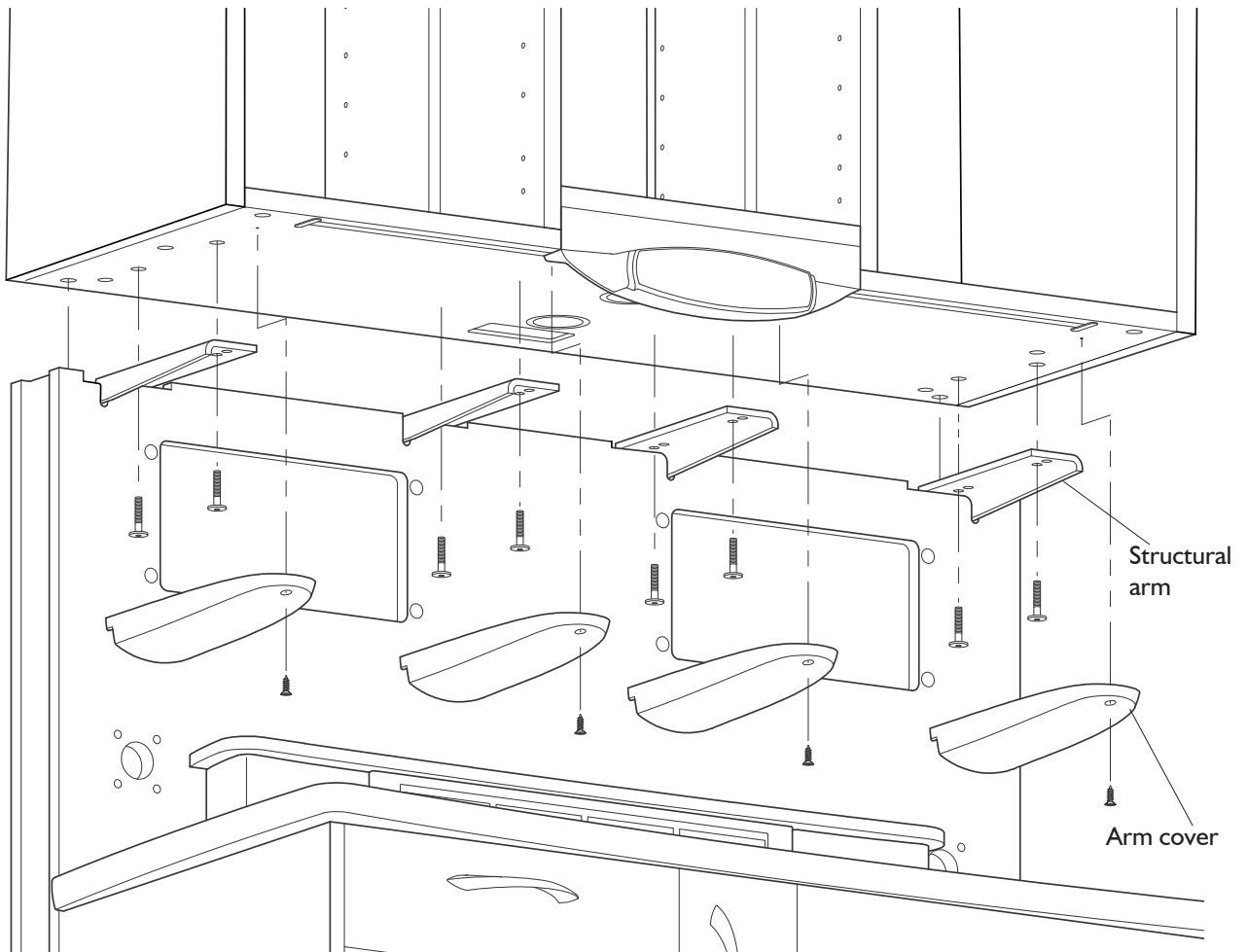


Position the bracket inside of the base and overlapping the bottom flange.

UPPER CABINET INSTALLATION

INSTALLING THE UPPER CABINET

- I** With a helper, position the Upper Module on the top of the Support Wall.



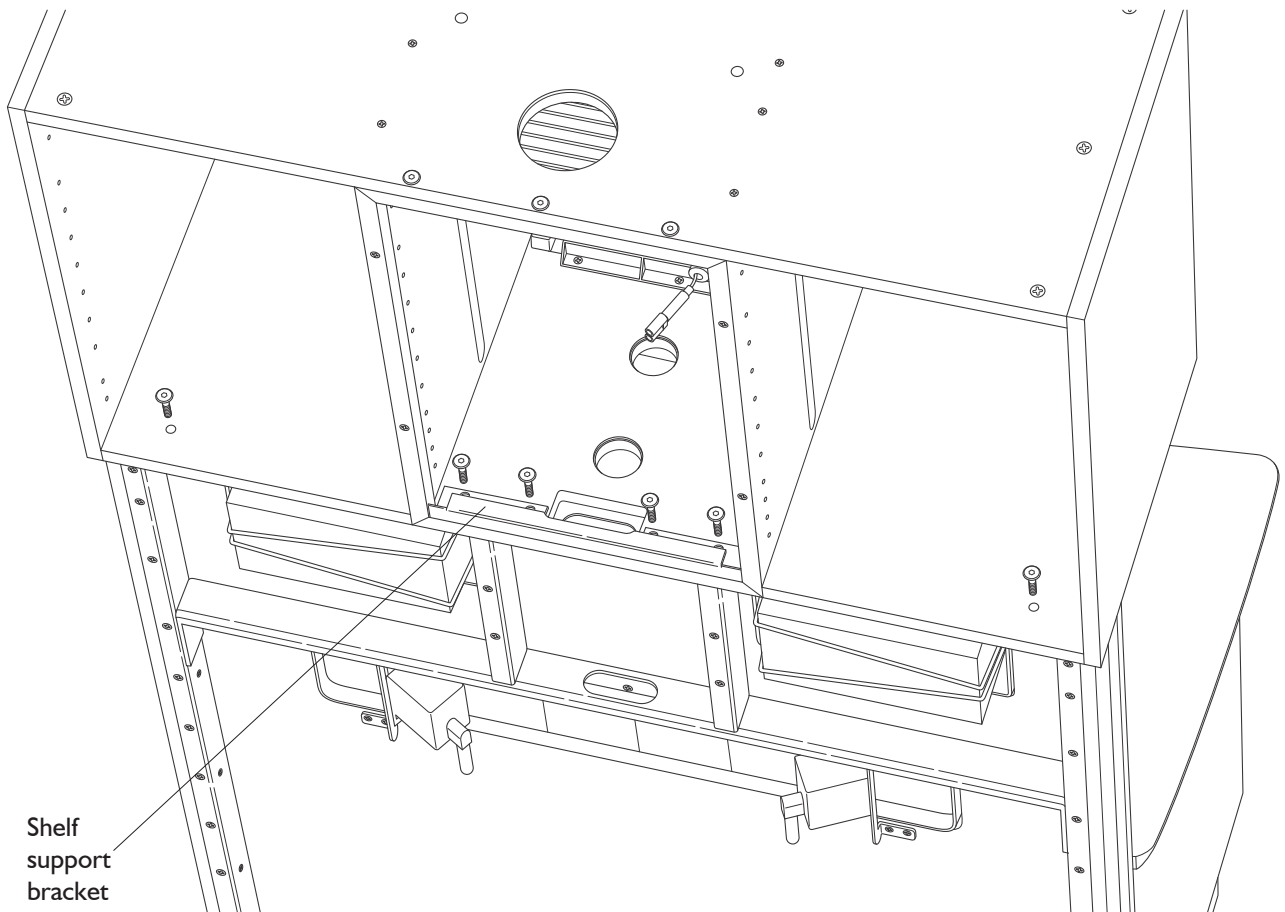
- 2** Align holes in the bottom of the upper with the holes in the structural arms which extend from the wall. Add the 8 supplied 1/4"-20 screws to secure the the upper cabinet from below though the structural arms and into threaded inserts in the bottom of the upper cabinet.

- 3** To install the arm covers on the bottom of the upper module, insert the tabs into the slots in the wood panel and push them flush to the panel. Then, align the hole in the plastic to the pilot hole in the wood and add the single small wood screw to secure the cover to the module. Complete this step for all 4 covers on the bottom of the upper.

UPPER CABINET INSTALLATION

INSTALLING THE UPPER CABINET CONT.

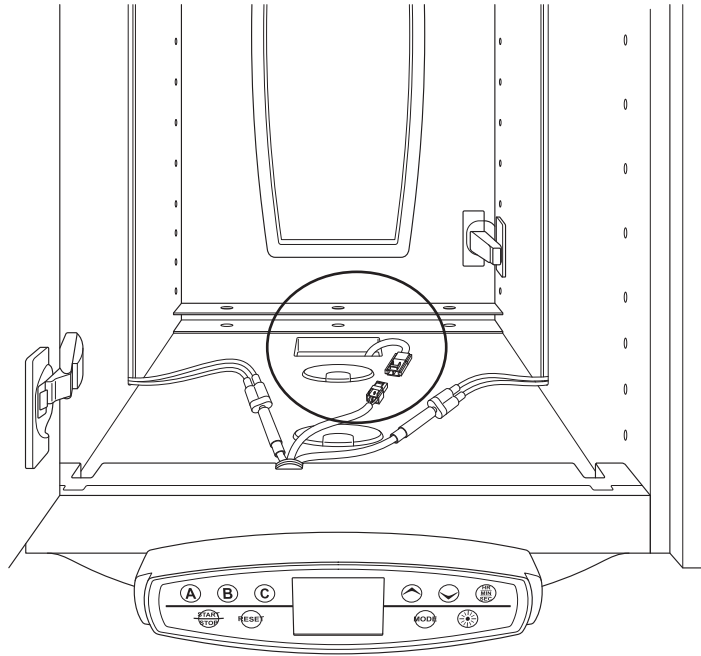
- 4** From the back of the cabinet, align the shelf support bracket to the four holes in the center section at the base of the upper.
- 5** Add the six 5/16" screws, assembling them from above at the shown locations in the illustration below.



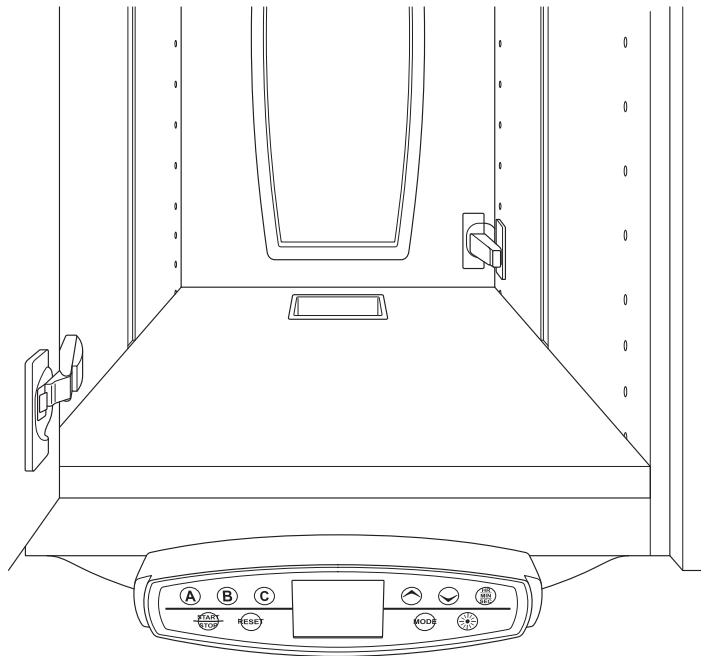
UPPER CABINET INSTALLATION

CENTER SECTION

- 1** Connect the power for the clock module and lighting in the area below the lower shelf in the center module as shown.



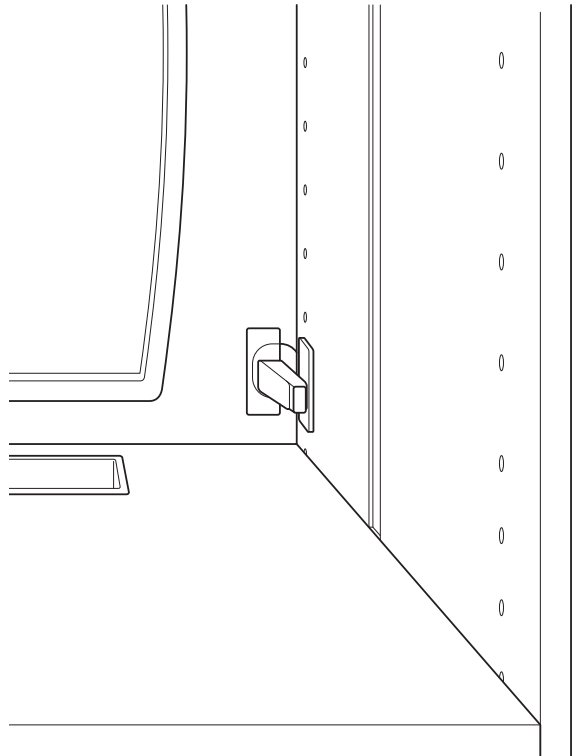
- 2** Add the shelf to cover the wire chase area of the upper as shown.



UPPER CABINET INSTALLATION

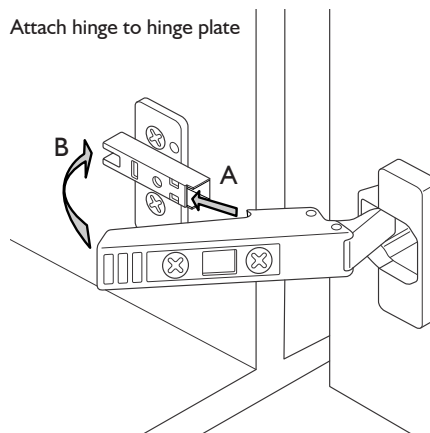
SHELVING AND DOORS

- 1** Insert the shelving hardware into the desired holes in the vertical divider panels and install the glass shelving.

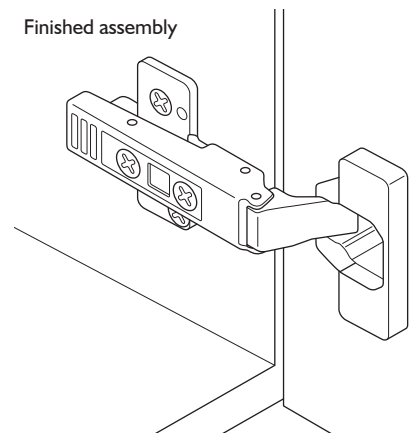


- 2** Install the doors by snapping the hinge mechanisms to the plates located on the divider panels of the upper. Do this by engaging the hook at the front of the plate (A) and the rotating the hinge body flush, pushing to engage until you hear an audible snap (B).

Attach hinge to hinge plate



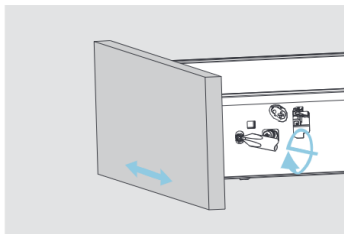
Finished assembly



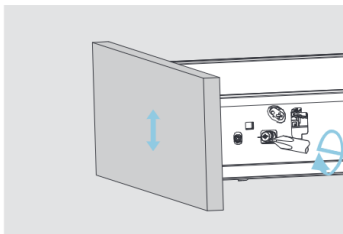
DOOR AND DRAWER ALIGNMENTS

ALIGN DRAWERS

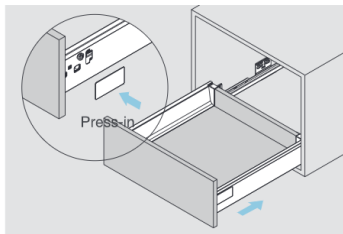
- 1** Align drawer faces and seams by adjusting the drawer face attachment.



Left&right adjustment

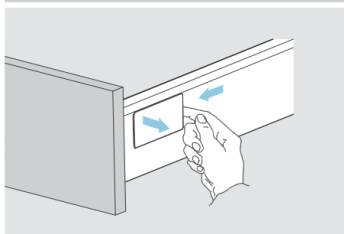


Up&down adjustment

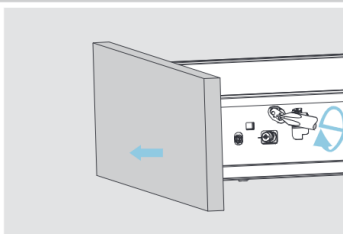


Slide into the cabinet

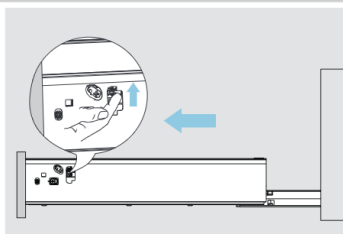
Removal



Tip up the cover and pull out



Turn screw driver to release the drawer front



Lift the release handle and pull out the drawer

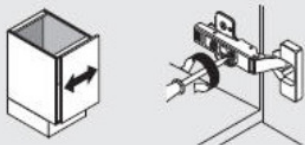
ALIGN DOORS

- 2** Align door faces and seams by adjusting the hinges.

Three-dimensional adjustment

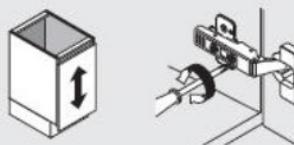
Side adjustment

Turn front screw to increase or decrease door overlay (± 2 mm).



Height adjustment

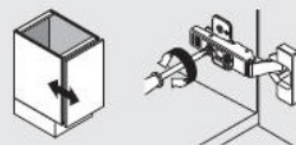
Rotate cam screw-on mounting plate to adjust door position (± 2 mm).



On non-cam mounting plates, loosen screw, adjust door and retighten screws.

Depth adjustment

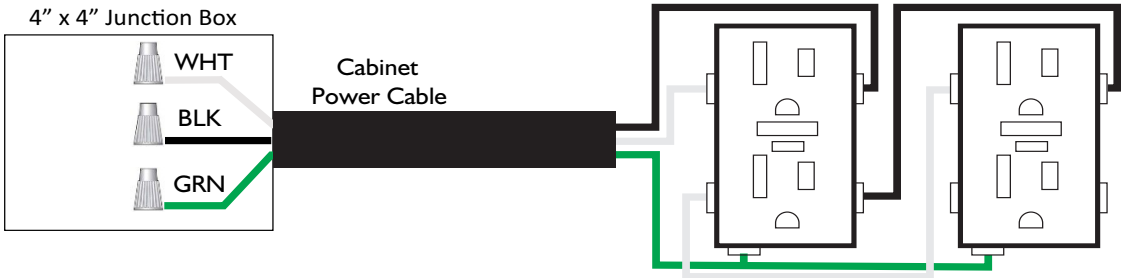
Turn rear spiral-tech cam screw to adjust door position (+3 mm, -2 mm).





For CLIP, loosen rear screw, adjust and retighten.

ELECTRICAL OUTLETS (SERIES 5 ONLY)

DIAGRAM



	WHT	WHITE	NEUTRAL
	BLK	BLACK	LINE
	GRN	GREEN or GREEN/YELLOW	GROUND

GROUNDING INSTRUCTIONS

This product must be connected to a grounded metal, permanent wiring system, or an equipment-grounding conductor must be run with the circuit conductors and connected to the equipment-grounding terminal or lead on the product.

